



**EPA**  
ALT-METHOD  
APPROVED

# VeraCAL

REAL-TIME FLARE  
MONITORING SOLUTION



## Innovative Measurement Solutions

JP3 is committed to innovation, customer satisfaction, and leadership in the oil and gas analysis market. Through advanced technology and targeted solutions, JP3 enhances process control, efficiency, and profitability for its global clientele.



**LOW MAINTENANCE**



**NO SHELTERS AND  
NO CONSUMABLES**



**RAPID MEASUREMENT  
SPEEDS**



**REAL-TIME RESULTS**



**MULTI-PARAMETER  
MEASUREMENTS**



**MOBILE SOLUTION**



**EPA APPROVED REAL-TIME  
FLARE MONITORING SOLUTION**



**UPSTREAM**



**MIDSTREAM**



**DOWNSTREAM**



**JP3.COM**

512-537-8450 • [info@jp3.com](mailto:info@jp3.com)

# VeraCAL Flare

Meeting NSPS OOOOb requirements shouldn't mean overcomplicating your operations.

- » Sampling Issues → **Real-time, in-line, 30s data**
- » Poor data → **24/7 continuous monitoring**
- » Intermittent flaring → **Captures worst-case events**
- » Remote sites → **No field visits needed**
- » High cost → **No lab work, lower OPEX**
- » "Worst case" hard to time → **Auto-detected in real-time**
- » Safety/logistics → **C1D2 rated, no tech on-site**
- » Compliance gaps → **EPA audit-ready, OOOOb, Subpart W Tier 1, Method 9/22, OGMP 2.0**
- » Low-pressure flares → **Built-in sample conditioning**
- » Budget limits → **CapEx / OpEx / DaaS / Rental options**



## Effortless, Reliable Flare Compliance



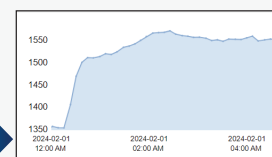
### SAMPLING

- » Mobile Sampling Lab (14 days)
- » Validates twice daily
- » Capable of sampling every 30 seconds



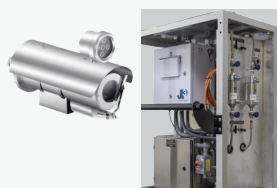
### COMPLIANT

- » C1D2 Certified
- » 120V Power (other power options available)
- » Sample connection to the flare line



### DATA

- » Real-time, accurate data
- » Easy to use
- » Integration with Operations



### VISUAL INSPECTION

- » Compliant with EPA methods 9 and 22
- » Smoke/Opacity monitoring

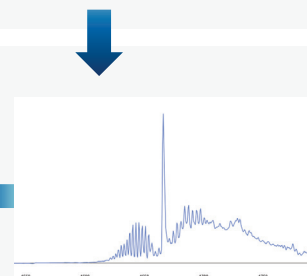
### EPA

- » EPA Alt Method approved Report.

C1	59.81 mol %
C2	21.68 mol %
C3	6.77 mol %
IC4	6.06 mol %
nC4	4.85 mol %
IC5	0 mol %
nC5	0.84 mol %
C6+	0 mol %
Dry NHV (25C)	1365.45 btu/d

### REPORTING

- » C1-C6+
- » NHV
- » Pressure
- » Temperature



### CALIBRATION

- » Spectrum calibration quarterly.
- » Wavelength tuning every scan (30 seconds).